

SPECIFICATIONS:

- **FREQUENCY:**..... 0.5 GHz TO 18 GHz
- **INSERTION LOSS:**..... REFLECTIVE: 3.5db
ABSORPTIVE: 4.25db
- **ISOLATION:**..... 0.5 GHz TO 2 GHz: 60db
2 GHz TO 18 GHz: 70db
- **VSWR:**..... REFLECTIVE IN/OUT: 2.0:1
ABSORPTIVE IN/OUT: 2.0:1
ABSORPTIVE OUT/OFF: 2.0:1
- **SPEED:**..... RISE: 10ns TYPICAL, 15ns MAX.
FALL: 10ns TYPICAL, 15ns MAX.
DELAY ON: 75ns TYPICAL, 100ns MAX.
DELAY OFF: 75ns TYPICAL, 100ns MAX.
- **POWER INPUT:**..... (CW)+20dBm (STANDARD), +10 dBm (HIGH SPEED)
- **SURVIVAL POWER:**..... 1 WATT CW, 10 WATTS PEAK 1 usec
- **CONTROL:**..... TTL LOGIC "0"=ON "1"=OFF
- **POWER SUPPLY:**..... +5V @ 300 mA MAX.
-5V @ 75mA MAX.(RELECTIVE)
100mA MAX.(ABSORPTIVE/NON-REFLECTIVE)

OPTIONS:

- INDEPENDENT CONTROL WITH SOLDER PIN STANDARD
- DEC-MP..... 3 BIT DECODER WITH MULTIPIN
 - DEC-SP..... 3 BIT DECODER WITH SOLDER PIN
 - MP-IND..... INDEPENDENT CONTROL WITH MULTIPIN
 - 10M18..... 10 MHz TO 18 GHz (INSERTION LOSS INCREASES BY 1.5db AT 10 MHz AND 0.5db AT 18 GHz)
 - 100M18..... 100 MHz TO 18 GHz (INSERTION LOSS INCREASES BY 1.5db AT 100 MHz AND 0.5db AT 18 GHz)
 - 118..... 1 GHz TO 18 GHz (NO CHANGE IN INSERTION LOSS)
 - 218..... 2 GHz TO 18 GHz (NO CHANGE IN INSERTION LOSS)
 - 412..... 4 GHz TO 12.4 GHz (NO CHANGE IN INSERTION LOSS)
 - 618..... 6 GHz TO 18 GHz (NO CHANGE IN INSERTION LOSS)
 - 1218..... 12 GHz TO 18 GHz (NO CHANGE IN INSERTION LOSS)
 - 100M20..... 100 MHz TO 20 GHz (INSERTION LOSS INCREASES BY 1.5db AT 100 MHz AND 1.0db AT 20 GHz)
 - 220..... 2 GHz TO 20 GHz (INSERTION LOSS INCREASES BY 1.0db AT 20 GHz)
 - 1020..... 10 GHz TO 20 GHz (INSERTION LOSS INCREASES BY 1.0db AT 20 GHz)
 - B01..... -12V POWER SUPPLIES
 - B02..... -15V POWER SUPPLIES
 - B03..... REVERSE LOGIC "1"=ON "0"=OFF
 - B04..... DRIVERLESS, CURRENT CONTROLLED
 - B05..... HIGH SPEED, TURNON/TURNOFF 25 nsec MAXIMUM WHEN APPLICABLE
 - B06..... HIGH POWER - SPECIFY CW POWER, PEAK POWER, PULSE WIDTH, DUTY CYCLE, RF FREQUENCY AND BANDWIDTH
 - B07..... CUSTOM DESIGNED PRODUCT- SPECIFY INITIALS OF CUSTOMER
 - B08..... LOW VIDEO TRANSIENTS - SPECIFY VIDEO BANDWIDTH
 - B09..... LOW INSERTION LOSS VERSION
 - B10..... HIGHER ISOLATION VERSION
 - B11..... 0.4"THICK VERSION WITH REMOVABLE 2 HOLE FLANGE SMA (F)

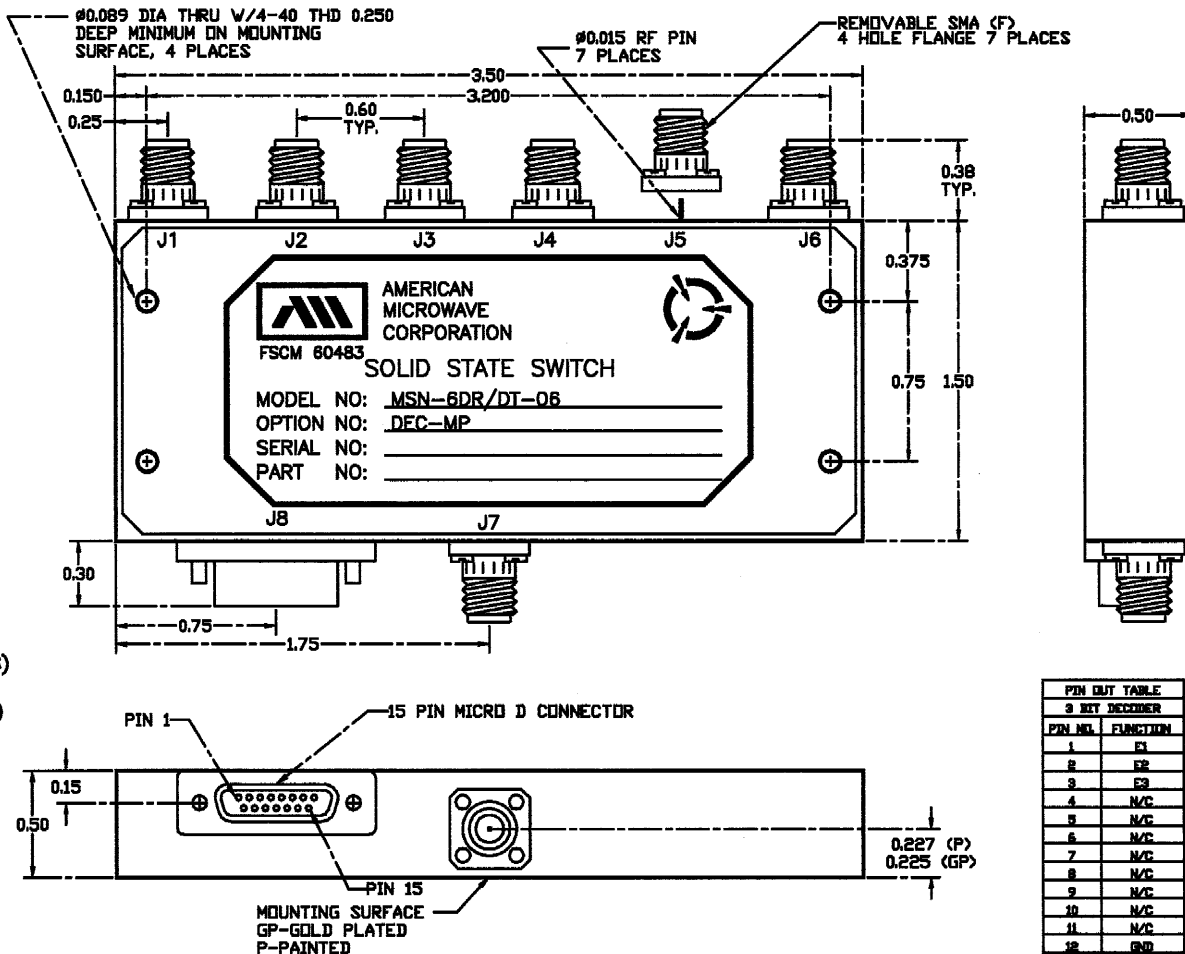
ENVIRONMENTAL RATINGS:

- **TEMPERATURE:**..... -55°C TO +85°C (OPERATING)
-85°C TO +125°C (STORAGE)
- **HUMIDITY:**..... MIL-STD-202F, METHOD 103B COND. B
- **SHOCK:**..... MIL-STD-202F, METHOD 213B COND. B
- **VIBRATION:**..... MIL-STD-202F, METHOD 204D COND. B
- **ALTITUDE:**..... MIL-STD-202F, METHOD 105C COND. B
- **TEMPERATURE CYCLE:**..... MIL-STD-202F, METHOD 107D COND. A

NOTE: THE ABOVE SPECIFICATIONS ARE SUBJECT TO CHANGE OR REVISION

ALL DIMENSIONS ARE IN INCHES
TOLERANCES:
X.XX ±0.020
X.XXX ±0.010

REVISIONS				
ZONE	REV.	DESCRIPTION	DATE	APPROVED
		ORIGINAL RELEASE	1/18/98	



PIN NO.	FUNCTION
1	E1
2	E2
3	E3
4	N/C
5	N/C
6	N/C
7	N/C
8	N/C
9	N/C
10	N/C
11	N/C
12	GN
13	+V
14	-V
15	GN

NOTE:
DR=WITH DRIVER, REFLECTIVE
DT=WITH DRIVER, NON-REFLECTIVE/ABSORPTIVE

PART NO.		AMERICAN MICROWAVE CORPORATION FREDERICK, MARYLAND	
APPROVALS	DATE	TITLE	
DRAWN WSP	1/18/98	OUTLINE DRAWING MSN-6DR/DT-06-DEC-MP REFLECTIVE OR NON-REFLECTIVE/ABSORPTIVE SOLID STATE SWITCH	
CHECKED		SIZE	FSCM NO.
ISSUED		A	60483
		DWG NO.	100-4296-2
		SCALE	N/S
		SHEET	1 of 1